

MONTHLY MEMBERSHIP PROGRESS REPORT

LOCATION TEXAS

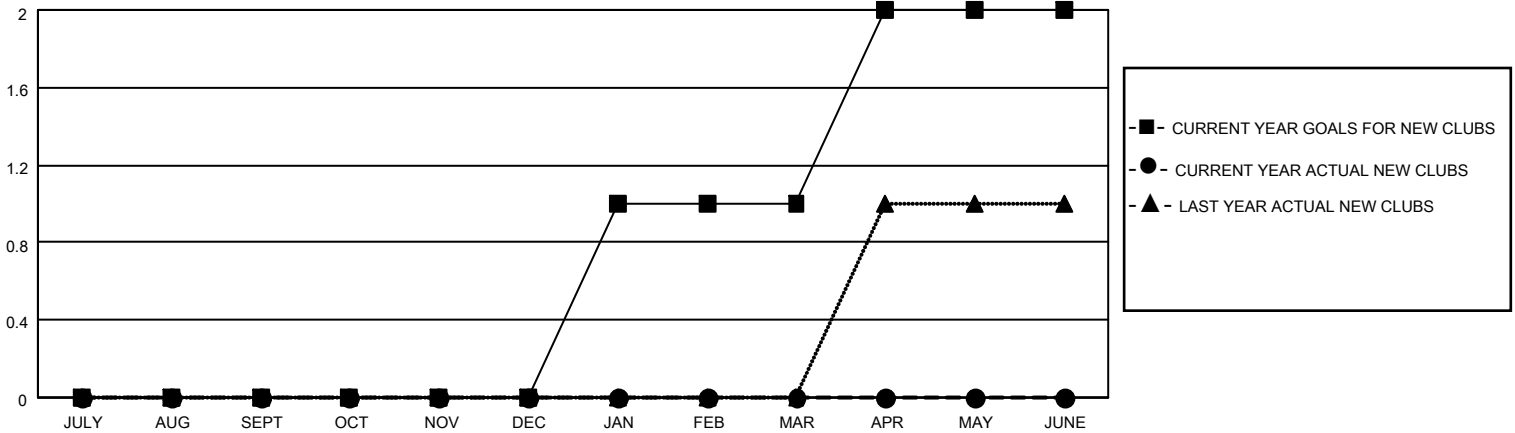
District 2 X3

Results as of: 5/31/2021

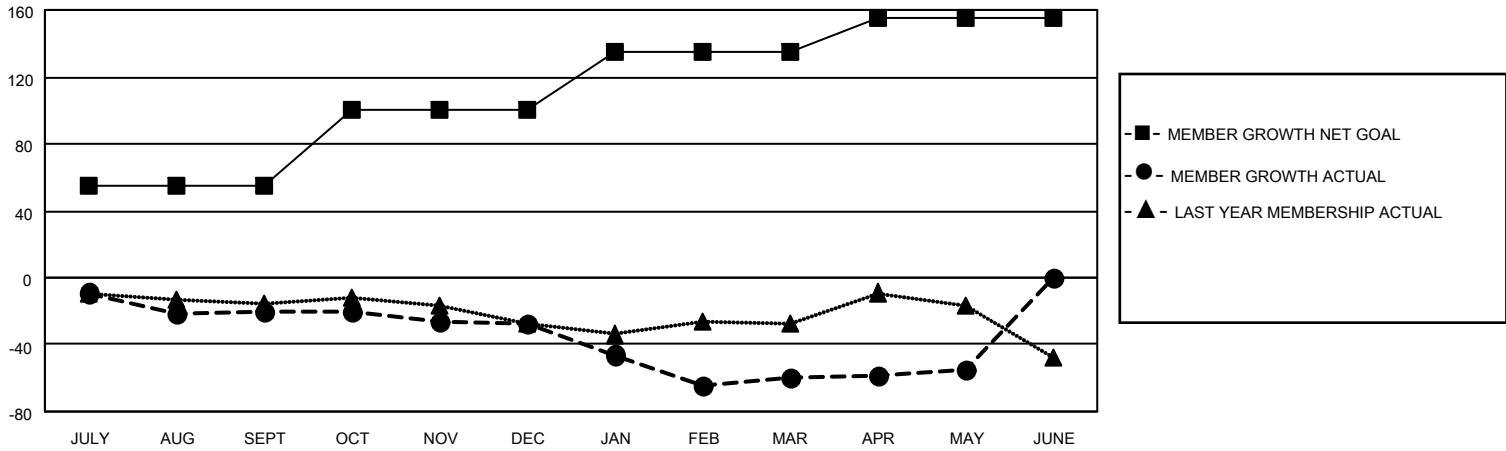
Clubs			
RESULTS FOR 2020-2021			
QUARTER	NEW CLUB GOAL	NEW CLUBS	DROPPED CLUBS
JULY/AUG/SEPT	0	0	0
OCT/NOV/DEC	0	0	0
JAN/FEB/MAR	1	0	1
APR/MAY/JUNE	1	0	0

Members			
RESULTS FOR 2020-2021			
QUARTER	MEMBER GROWTH NET GOAL	MEMBER GROWTH ACTUAL	DROPPED MEMBERS ACTUAL (including transfers)
JULY/AUG/SEPT	55	34	52
OCT/NOV/DEC	45	46	52
JAN/FEB/MAR	35	31	63
APR/MAY/JUNE	20	36	30

GOALS AND ACTUAL NEW CLUBS CUMULATIVE



GOALS AND ACTUAL MEMBERS CUMULATIVE



DROPPED CLUBS: 1	37 CLUBS OF 50 ADDED 1 OR MORE NEW MEMBERS	<u>GENDER DISTRIBUTION</u> MALE 865 (63.46%) FEMALE 498 (36.54%)
<u>DROPPED MEMBERS</u> DECEASED 16 CLUB CANCELLED 8 OTHER 173 <hr/> TOTAL 197	CLICK HERE FOR CUMULATIVE MEMBERSHIP DATA	TOTAL FAMILY UNIT MEMBERS 176 FAMILY MEMBERS PAYING HALF DUES 88